

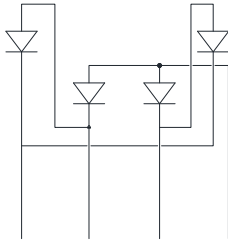
Low VF Bridge Rectifiers

Features

- UL recognition, file #E230084
- Glass passivated chip junction
- Thin single in-line package
- High surge current capability
- Solder dip 275 °C max. 7 s, per JESD 22-B106

Typical Applications

General purpose use in AC/DC bridge full wave rectification for switching power supply, home appliances, office equipment, industrial automation applications.



Mechanical Data

Package: 6KBJ

Molding compound meets UL 94 V-0 fM 2 M V-0 pound

Terminals: Tin plated leads, solderable per J-STD-002 and JESD22-B102

Polarity: As marked on body

Maximum Ratings (T_a=25 °C Unless otherwise specified)

	Without heatsink T _a =25 °C			3.5
Forward Surge Current (Non-repetitive) @60Hz Half-sine wave, 1 cycle, T _j =25 °C		IFSM	A	400
Forward Surge Current (Non-repetitive) @1ms, square wave, 1 cycle, T _j =25 °C				800
Current squared time @1ms ≤ t ≤ 8.3ms T _j =25 °C, Rating of per diode		I ² t	A ² S	664
Storage temperature		T _{stg}	-	-55 ~ +150
Junction temperature		T _j	-	-55 ~ +150
Dielectric strength @ Terminals to case, AC 1 minute		V _{dis}	KV	2.5
Mounting torque @Recommend torque 5kg cm		T _{or}	kg cm	8



GBJL2006

Electrical Characteristics $T_a=25$ Unless otherwise specified

PARAMETER	SYMBOL	UNIT	TEST CONDITIONS	GBJL2006
Maximum instantaneous forward voltage drop per diode	V _F	V	I _{FM} =10A	0.92
Maximum DC reverse current at rated DC blocking voltage per diode	I _R	μA	T _j =25 -	5
			T _j =125 -	200
Typical junction capacitance	C _j	pF	Measured at 1MHz and Applied Reverse Voltage of 4.0 V.D.C	197

Thermal Characteristics $T_a=25$ Unless otherwise specified

PARAMETER		SYMBOL	UNIT	GBJL2006
Typical Thermal Resistance	Between junction and ambient, Without heatsink	R J-A	- /W	18
	Between junction and case, With heatsink	R J-C		1.5

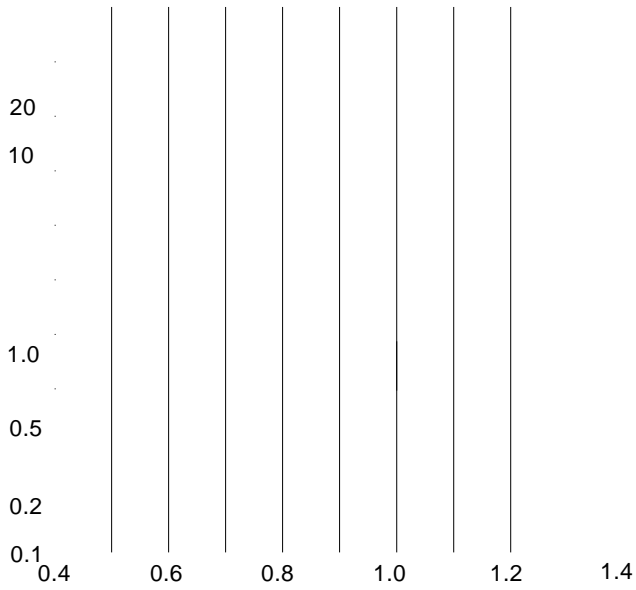
Note: Device mounted on 75mm x 45mm x 5.5mm Aluminum Plate Heatsink.

Ordering Information (Example)

PREFERED P/N	PACKING CODE	UNIT WEIGHT(g)	MINIIMUM
--------------	--------------	----------------	----------



FIG3: Typical Forward Voltage



Outline Dimensions

6KBJ		
Dim	Min	Max
A	29.7	30.3
B	19.7	20.3
C	17.0	18.0
D	4.8	5.8
E	3.8	4.2
F	7.3	7.7
G	9.8	10.2
H	0.9	1.1
I	2.0	2.4
J	2.3	2.7
K	3.4	3.8
L	4.4	4.8
M	10.8	11.2
N	3.1	3.7
O	3.1	3.4
P	0.6	0.8



Disclaimer

The information presented in this document is for reference only. Yangzhou Yangjie Electronic Technology Co., Ltd. reserves the right to make changes without notice for the specification of the products displayed herein to improve reliability, function or design or otherwise.