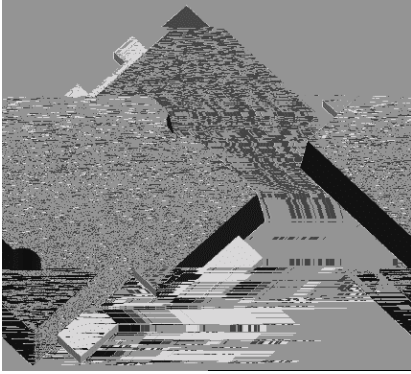


Schottky Rectifier



Features

- Ideal for automated placement
- Low power losses
- High forward surge capability
- Meets MSL level1, per J-STD-020, LF maximum peak of 260 °C

Typical Applications

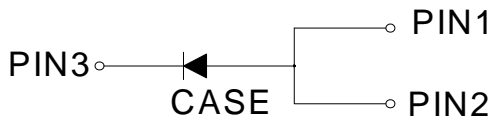
For use in lighting, fast switching rectification of power suppliers, inverters, converters, and freewheeling diodes for consumer, automotive, and telecommunication.

Mechanical Data

Package: TO-277

Molding compound meets UL 94 V-0 flammability rating, RoHS-compliant, Halogen free

Terminals: Tin plated leads, solderable per J-STD-002 and JESD22-B102



Maximum Ratings (T_a=25 Unless otherwise specified)

PARAMETER	SYMBOL	UNIT	Value
Forward Current	I _{FSM}	A	250
Current Squared Time @1ms t 8.3ms T _j =25	I ² t	A ² s	259
Storage Temperature	T _{stg}		-55 ~ +150
Junction Temperature	T _j		-55 ~ +150

Electrical Characteristics T_a=25 Unless otherwise specified

PARAMETER	SYMBOL	UNIT	TEST CONDITIONS	Min	Typ	Max
Peak Forward Voltage	V _{FM}	V	I _{FM} = 10.0A, T _j = 25	-	0.78	0.82
			I _{FM} = 10.0A, T _j = 125	-	0.66	0.7

Reverse BreakdQ

L

a

M

Note2: Pulse test: pulse width 40mS



SS10U150PA

Thermal Characteristics $T_a=25$ Unless otherwise specified

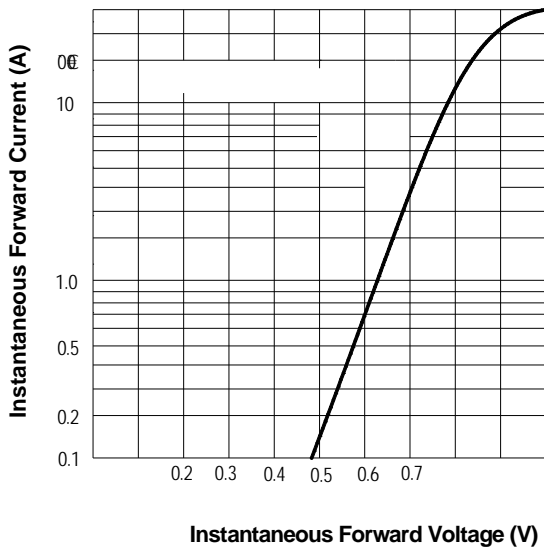
PARAMETER		SYMBOL	UNIT	SS10U150PA
Thermal Resistance	Junction to Case	R_{J-C}	/W	8

Ordering Information (Example)

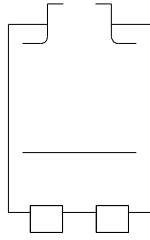
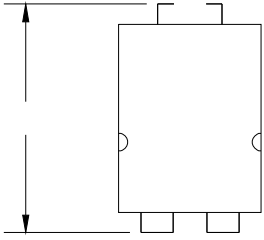
PREFERED P/N	PACKAGE CODE	UNIT WEIGHT(g)	MINIMUM PACKAGE(pcs)	INNER BOX QUANTITY(pcs)	OUTER CARTON QUANTITY(pcs)	DELIVERY MODE
SS10U150PA	F1	Approximate 0.0828	5000	10000	80000	13" reel

Characteristics(Typical)

FIG3: Forward Voltage



v2XWOLQH 'LPHQVLRQV





SS10U150PA

Disclaimer

The information presented in this document is for reference only. Yangzhou Yangjie Electronic Technology Co., Ltd. reserves the right to make changes without notice for the specification of the products displayed herein to improve reliability, function or design or otherwise.

The product listed herei