



General Purpose Rectifier Diodes

Features

- < igh surge forward current capability
- < igh purity & high temperature epoxy encapsulation for enhanced mechanical strength and moisture resistance
- Guard ring for enhanced ruggedness and long term reliability
- Solder dip 27) š C max & per > ESD 22-B106

Typical Application

Input rectification

Mechanical Data

Package: TO-247AC

Molding compound meets UL - 4 V-0 flammability rating & Ro < S-compliant & halogen-free

Terminals: Tin plated leads & solderable per

> -STD-00 M M P

m MPolarity: As marked

Maximum Ratings (T = 25 °C)

PARAMETER	SYMBOL	UNIT	60EPS22
Device marking code			60EPS22
Maximum Repetitive Peak Reverse Voltage	V_{RRM}	V	2200
Maximum RMS Voltage	V_{RMS}	V	1) 40
Maximum DC Blocking Voltage	V_{DC}	V	2200
Average Rectified Output Current 4 60 < n half sine-wave & R-load & Tc (FIG.1)	I_o	A	60
Surge(Non-repetitive) Forward Current 4 60 < n half sine-wave & 1 cycle & T ^ 12)	I_{FSM}	A	
& XU UHQW 6 TXDUHG 7 LPH # - PV " W	PV_{TSM}	W	
6 WRUDJH 7 HPSHUDWXUH	T_{VWJ}	°C	

Electrical Characteristics (T = 25 °C)

PARAMETER	SYMBOL	UNIT	TEST CONDITIONS	Min	Typ	Max
Instantaneous forward voltage drop per diode	V_{FM}	V	$I_{FM} = 1.30.0A$	0.7	1.0)	1.30
			$I_{FM} = 1.60.0A$	-	1.22	1.) 0
DC reverse current at rated DC blocking voltage per diode	I_{RRM1}	uA	$V_{RM} = 1 V_{RRM}$ T ^ 12)			
			95.0 95.50			

% # (

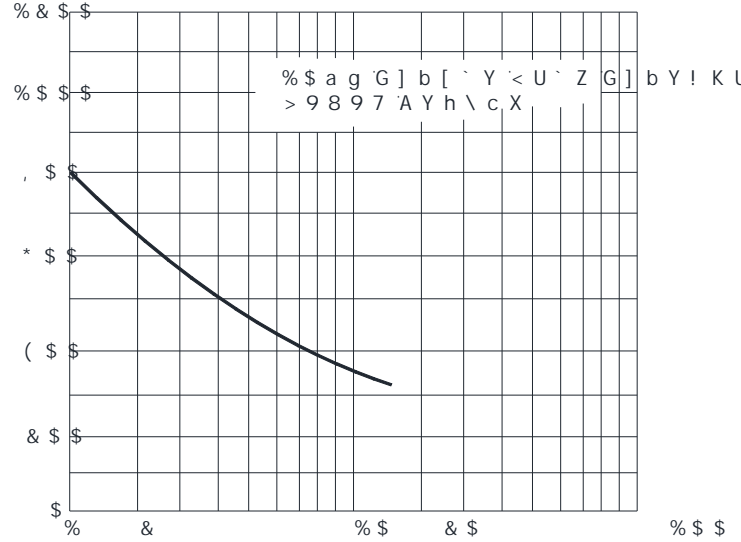


60EPS22

Thermal Characteristics

PARAMETER		SYMBOL	UNIT	60EPS22
Typical Thermal Resistance	Between junction and ambient	$R_{\theta JA}$	$^{\circ}C/W$	
				5

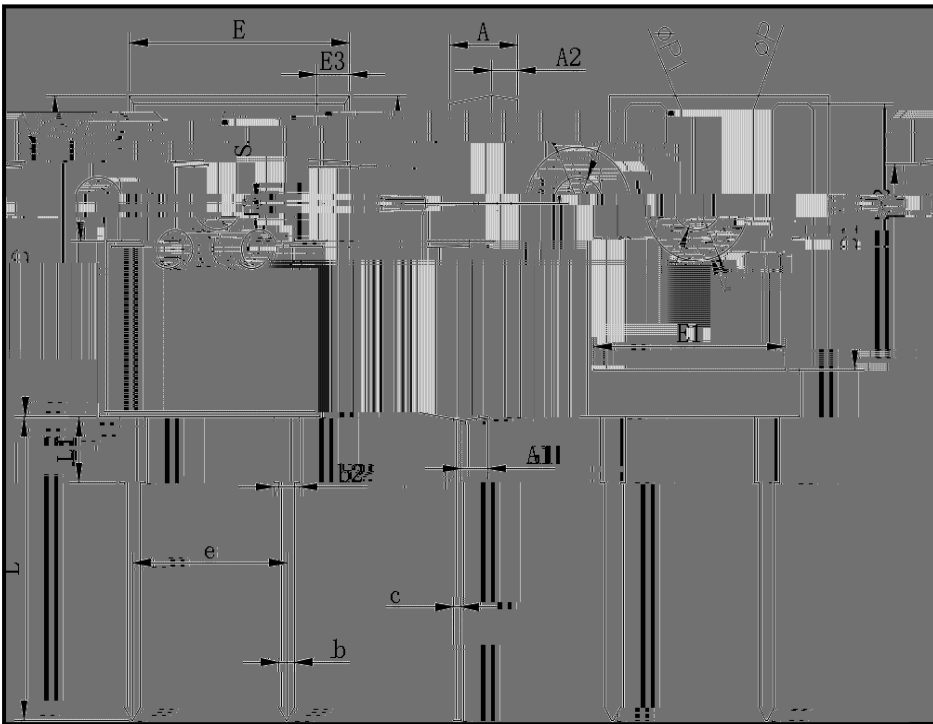
Characteristics (Typical)



& # (' .



Outline Dimensions



TO-247AC		
Dim	Min	Max
A	4.80) .20
A1	2.21	2.61
A2	1.8)	2.1)
b	1.00	1.40
b2	1. - 1	2.21
c	0.) 0	0.70
D	20.70	21.30
D1	16.2)	16.8)
E	1) .) 0	16.10
E1	13.00	13.60
E2	4.80) .20
E3	2.30	2.70
e	10.88 TYP	
L	1 - .62	20.22
L1	-	4.30
∅ 3		
∅ 3		
6	7 < 3	



60EPS22

Disclaimer

The information presented in this document is for reference only. Yangn Hou Yang ^ ie Electronics Technology Co. Ā Ltd. reserves the right to make changes without notice for the specification of the products displayed herein to improve reliability Ā functionality design or otherwise.

The product listed herein is designed to be used with ordinary electronic equipment or devices Ā and not designed to be used with equipment or devices which require high level of reliability. A malfunction of which would directly endanger human life (such as medical instruments, transportation equipment, aerospace machinery Ā nuclear-reactor controllers, fuel controllers and other safety devices) Ā Yang ^ ie or anyone on behalf Ā assumes no responsibility or liability for any damages resulting from such improper use of sale.

This publication supersedes and replaces all information previously supplied. For additional information Ā please visit our website <http://www.21yang^ie.com> or consult your nearest Yang ^ ie's sales office for assistance.

(# (.