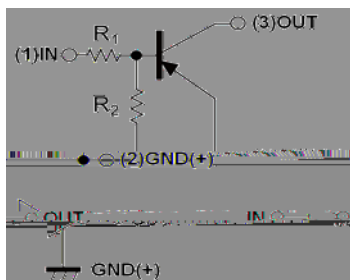




DTA143XCA

RoHS
COMPLIANT

PNP Digital Transistors (Built-in Resistors)



Features

Application

Mechanical data
Package
Terminals

Maximum Ratings

| Item | Symbol | Unit | Conditions | Value |
|-----------------------|--------|------|------------|---------------|
| Input voltage | V_i | V | | - & \$ to Ž + |
| Output current | I_o | mA | | -1 \$ \$ |
| Power dissipation | P_D | mK | | & \$ \$ |
| > unction temperature | $> T$ | | | |
| | | | | |



DTA143XCA

RoHS
COMPLIANT

Electrical Characteristics

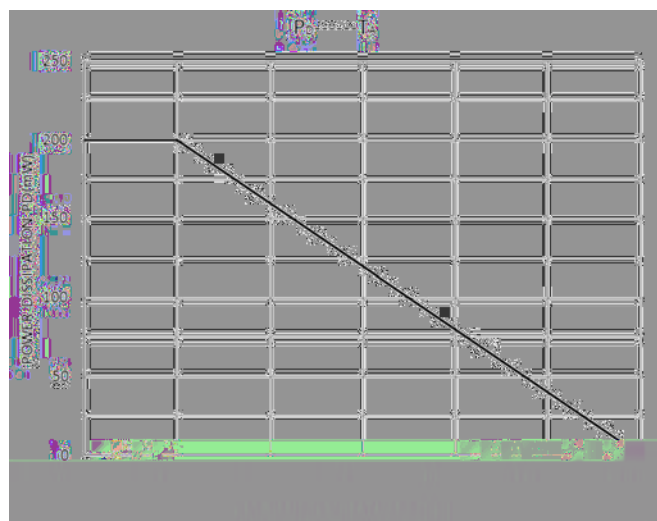
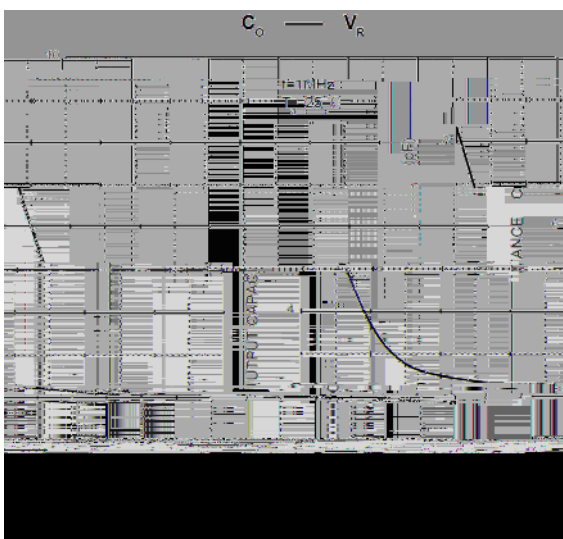
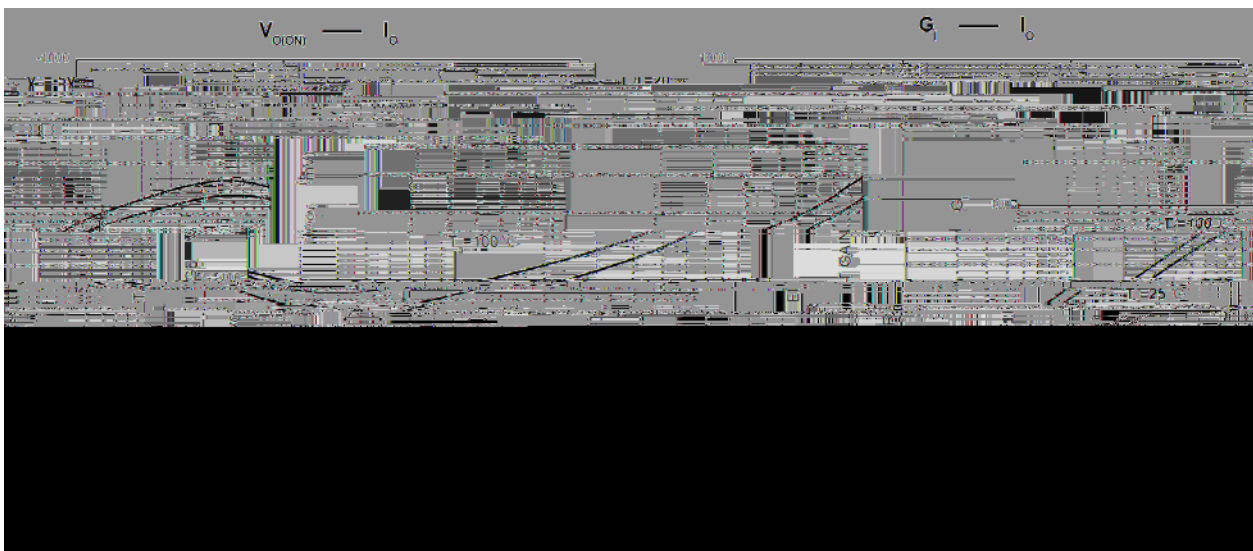
| Item | Symbol | Unit | Conditions | Min | Typ |
|------|--------|------|------------|-----|-----|
|------|--------|------|------------|-----|-----|



DTA143XCA

RoHS
COMPLIANT

Characteristics

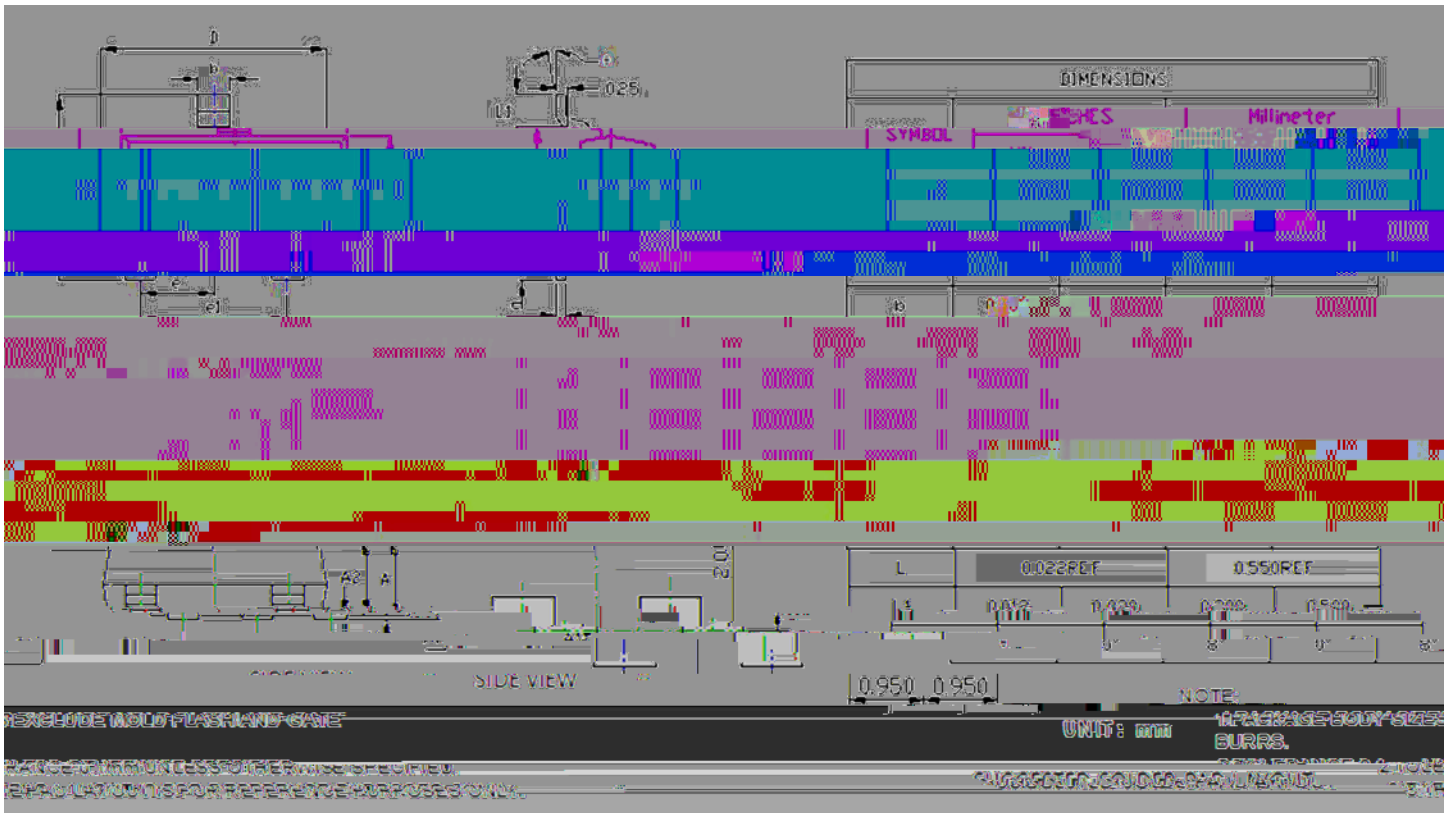




DTA143XCA

RoHS
COMPLIANT

Outline Dimensions



Note:

1. All dimensions are in millimeters (mm) unless otherwise specified.

4. All dimensions shown are exclusive of burrs and gate residues. Burrs and gate vestiges shall not exceed 0.15 mm in maximum.

5. Dimensional burrs that include stem burrs protrusions shall not exceed 0.100 mm on any side.

[尺寸不包括单边最大0.100 mm的中筋凸出部分]

6. Dimensional burrs that include stem burrs protrusions shall not exceed 0.100 mm on any side. mold mismatch.

[0.100 mm是塑封体的外部极限尺寸, 不包括包封溢料、内引线溢料、凸出部分以及胶体毛刺, 但是包含了包封错位的最大尺寸]

7. Formed leads shall be planar with respect to one another within a maximum of 0.076 mm relative to the seating plane.

[成型引脚端面应一平面, 其翘曲最大为0.076 mm]

8. ★It is the key size.

[★ 标记为关键尺寸]



DTA143XCA

RoHS
COMPLIANT

Disclaimer

