



( 6 ' ( 6 4

V0D[LPXP 5DWLQJV

3\$5\$0(7(5	6<0%2/	/,0,76	81,7
3HDN SXOVH SRZHV W	3SN		:
(6' DFFRUGLQJ WR ,( & DLU GLVFKDUJH	9(6' GLVFKDUJH	"	.9
(6' DFFRUGLQJ WR ,( & FRQWDFW		"	
-XQFWLRQ WHPSHUDWXUH	-	ā	
6WRUDJH WHPSHUDWXUH	67*	7a	

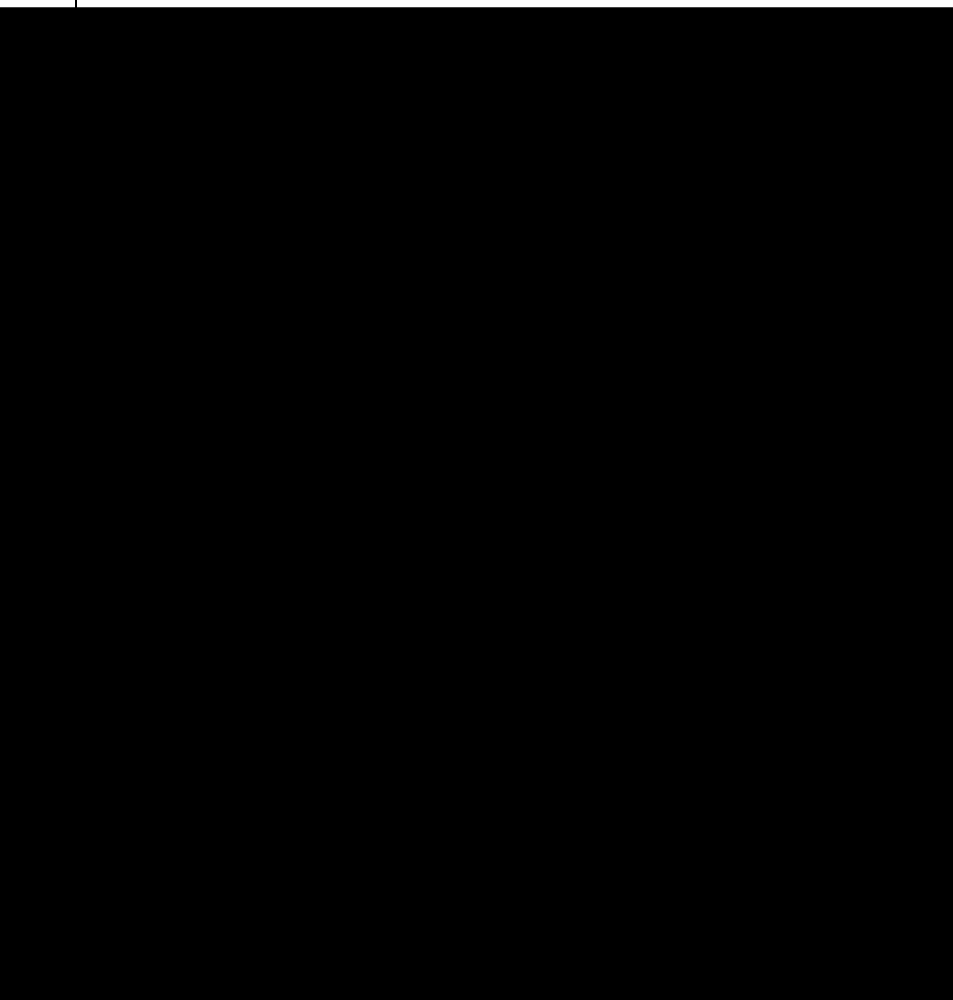
1RWHV

&\$87,21 6WUHVHV DERYH WKRVH OLVWJHG EQ\³BXREXSWHURDQJFKW GDWDQH WR WKRQRQR PLSRQHQWJQWQGLV LV D VWUH RSHUDWLRQ RI WKH FRPSRQHQW DW WKHWHFRVH DQGRWKWHGF RQGLVHLRSHVDEIRQLDQQRMFWRSLVHBI WKLV VSHFLILF

v(OHFWULFDO &KÄVDFWÄHULVWLFV

	0(7(5	6\PERO	81,7	&RQGLWLRQV	0LQ	7\S	0D[
5HYHUVH 6WDQGRII 9ROWDJH 5:0			9	9			
5HYHUVH EUHDNGRZQ YROWDJH 9%5				%59 P\$			,
5HYHUVH OHDNDJH FXUUHQW 5			\$	, 9:0 9			
)RUZDUG 9ROWDJH )			9	) 9P\$			,
			9	33 \$s W V			

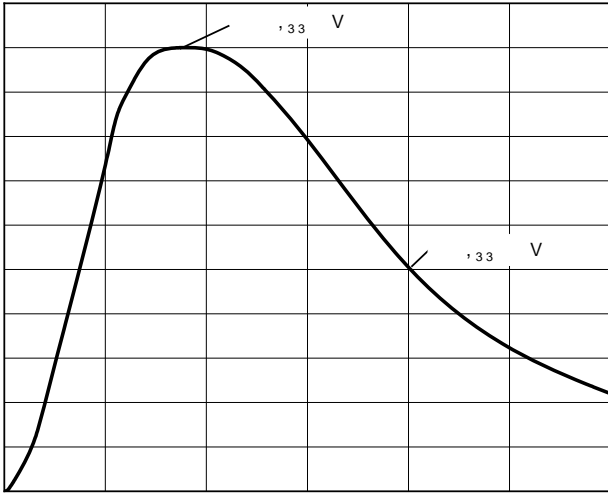
\$ 870 !!Hv fRVA € 9P\$



v & KDUDFWHULVWLFV 7\SLFDO

)LJ V 3XOVH :DYHIRUP

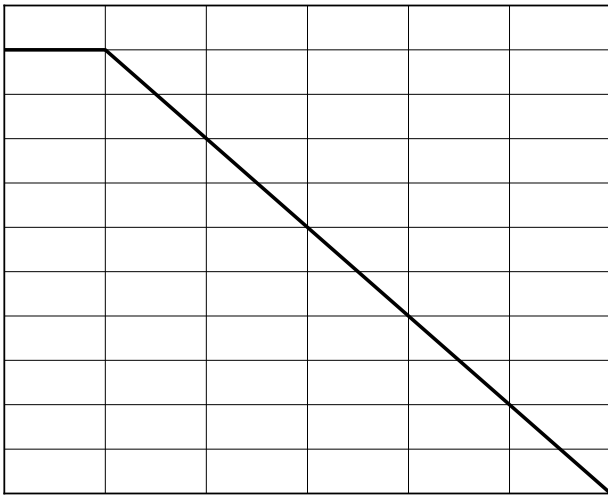
3HDN 3XOVH & XJUHQQW



7LPHV

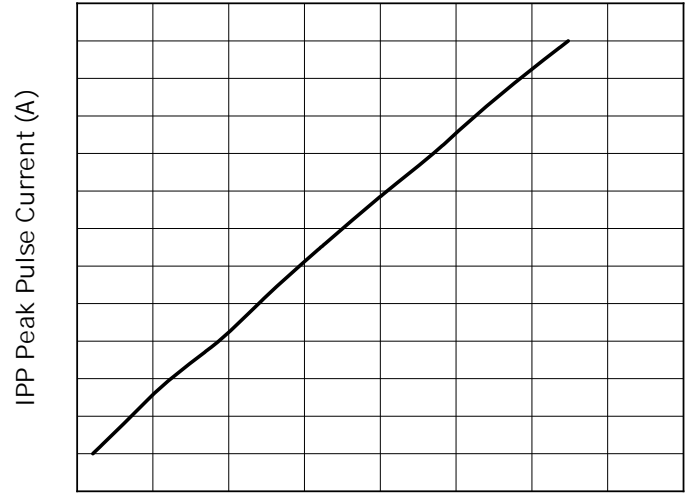
)LJ 3RZHU 'HUDWLQJ & XUYH

RI 5DWHG 3RZHU ,



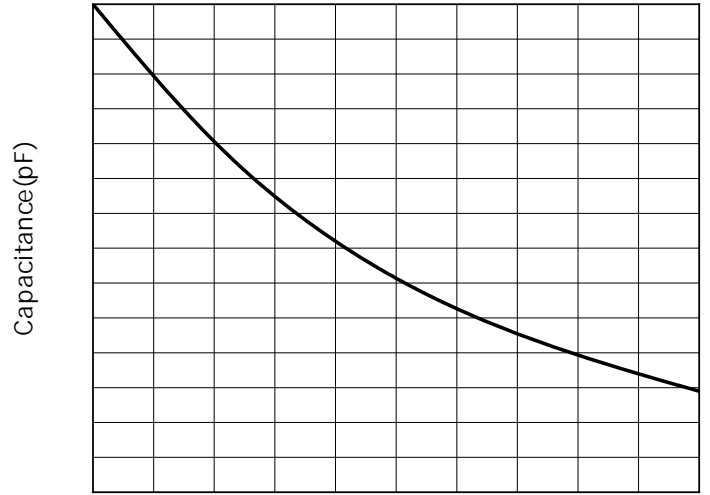
\$PELHQW 7HPSHUDWXUH 7

Fig.2: Peak Pulse Current vs Clamping Voltage



VC Clamping Voltage (V)

Fig.4: Capacitance vs. Bias



Bias Voltage(V)

v 2 X W O L Q H ' L P H Q V L R Q V

v 0 D U N L Q J , Q I R U P D W L R Q

ñ ^ X

1 R W H \$ O O P D U N L Q J L V D W P L G G O H R I W K H S U R G X F W E R G \\ \$ O O P D U N L Q J L V L Q O D V H U P D U N L Q J % R G \ F R O R U % O D F N
---

