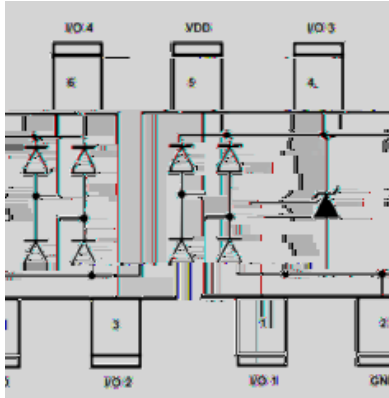




## 4-Line, Uni-directional, low Capacitance TVS Diode Array



### Features

### Applications

### Mechanical Characteristics





# ESDSL3304S2

## Absolute Maximum Ratings

PARAMETER	SYMBOL	Rating	UNIT

## Electrical Characteristics

PARAMETER	Symbol	Symbol	Conditions	Min	Typ	Max

## Typical Performance Characteristics

Fig.1 8/20 $\mu$ s waveform per IEC61000-4-5

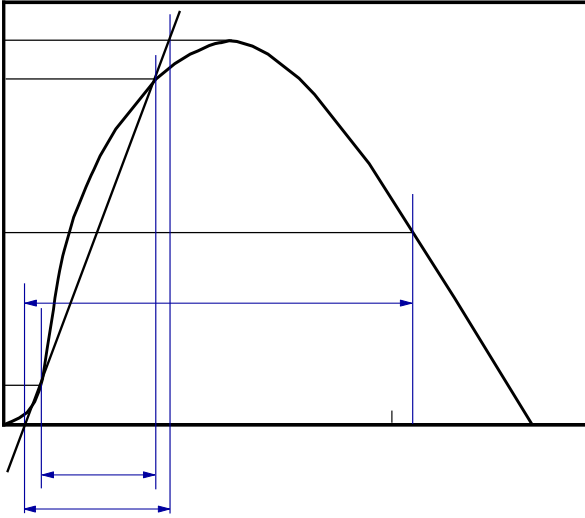
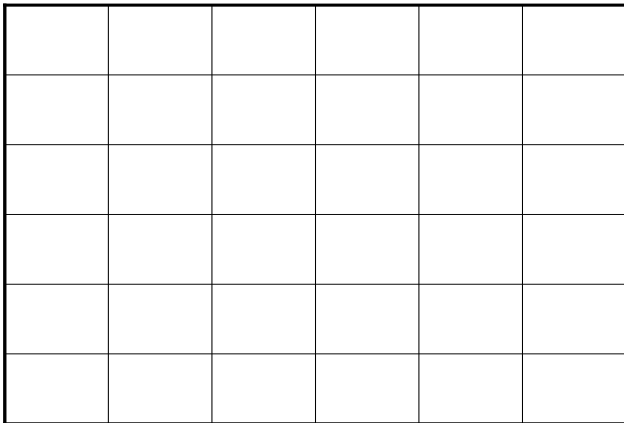
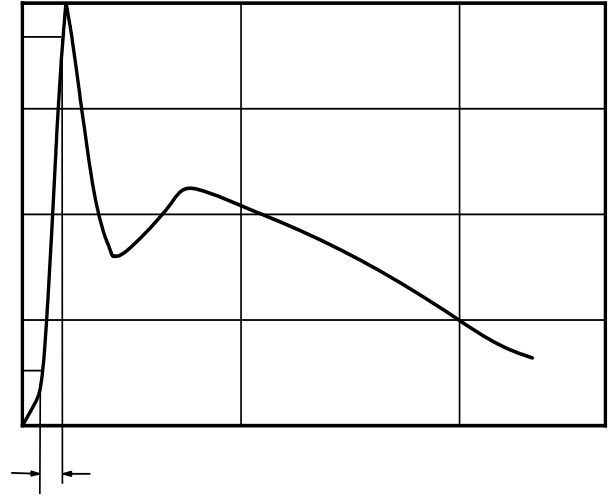


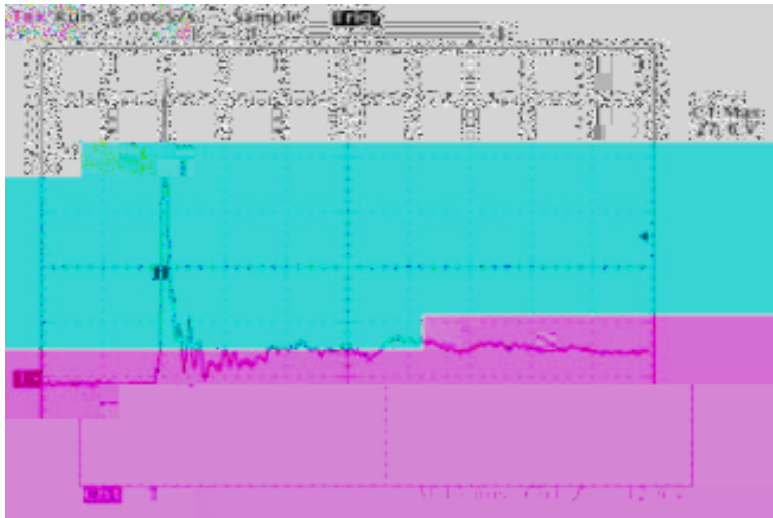
Fig.2 Contact discharge current waveform per IEC61000-4-2



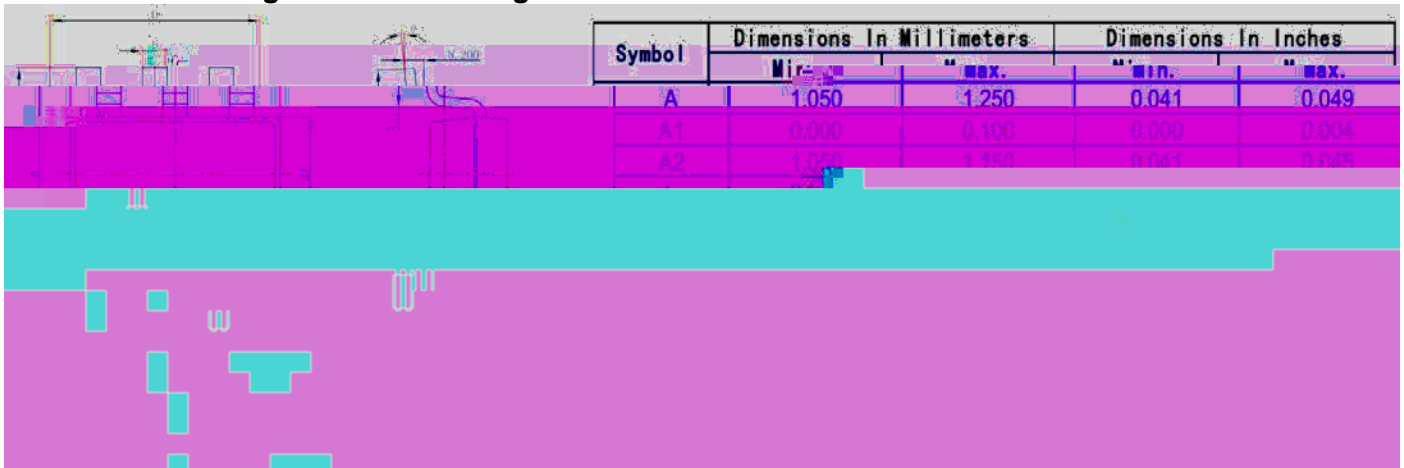


# ESDSL3304S2

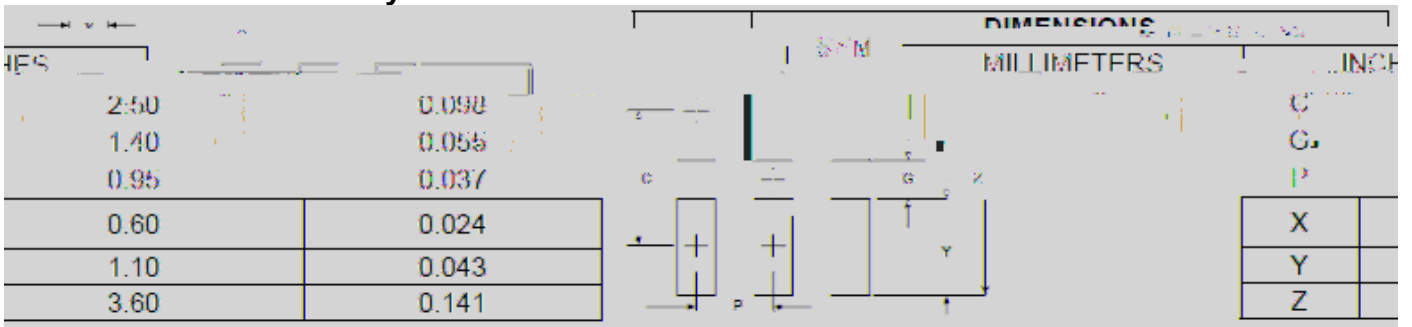
Fig.7 ESD clamping - I/O to GND  
 (+8kV contact discharge per IEC61000-4-2)



## SOT-23 6L Package Outline Drawing



## Recommended PCB Layout





**Disclaimer**